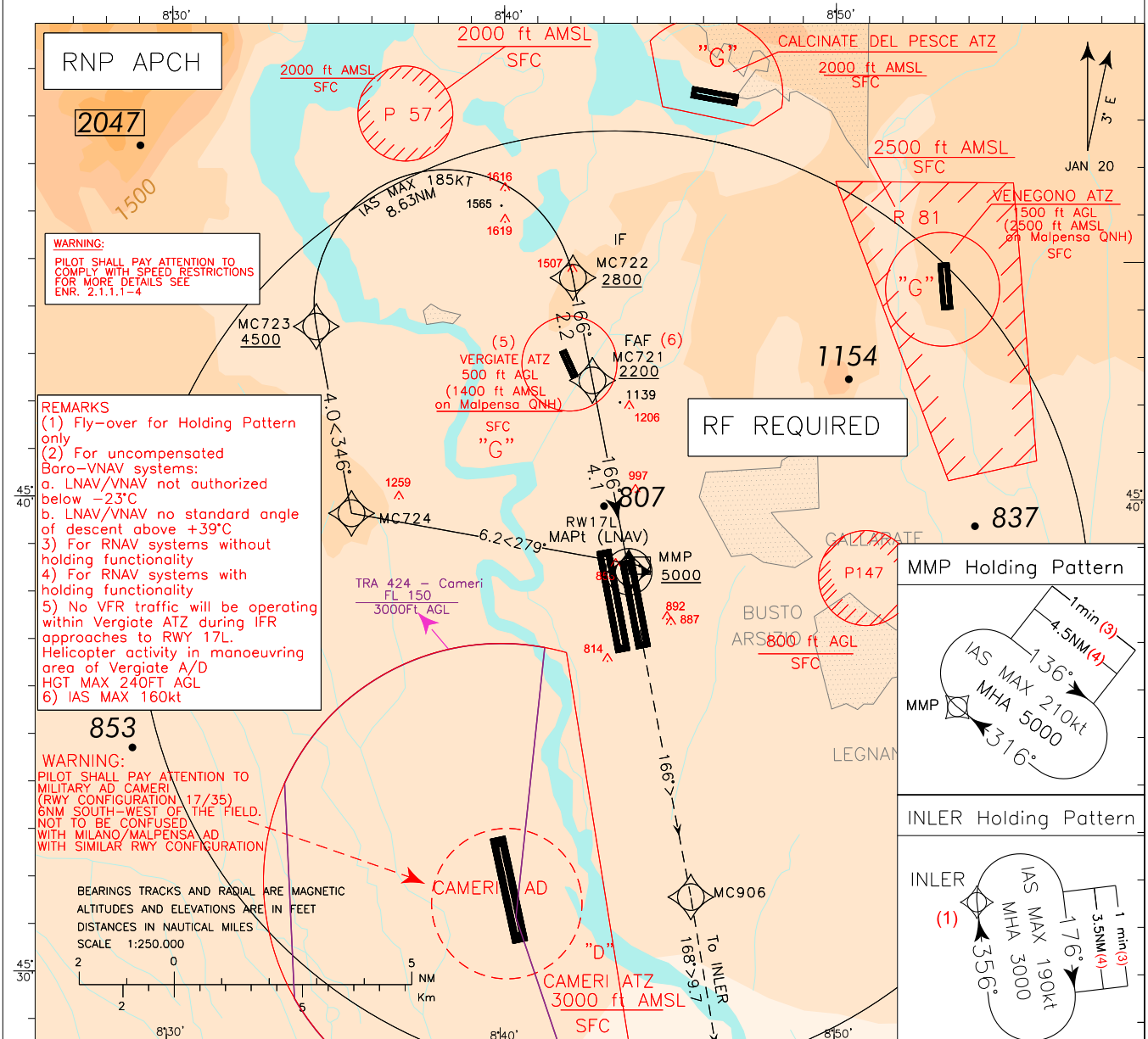


MILANO/MALPENSA  
RNP Y RWY 17L

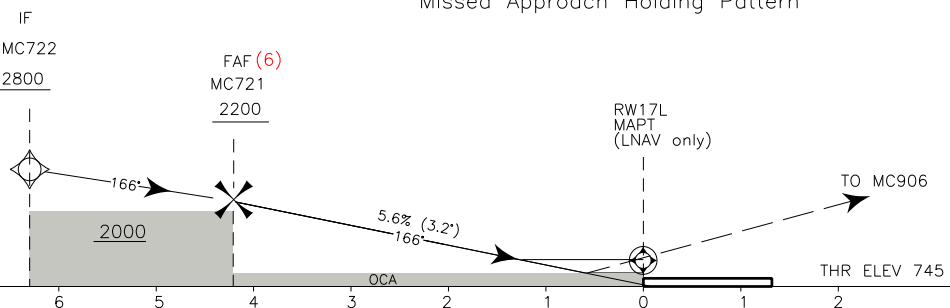
DOC 8168 – ED 6 2014 – AMDT 8

CHANGE: MAGNETIC VARIATION UPDATED



TRANSITION ALT 6000
TCH 15 M

MISSED APPROACH: Climbing to 3000FT, continue on course 166° to MC906 then proceed to INLER to join Missed Approach Holding Pattern



OCA (OCH)		A	B	C	D	REMARK (7) Circling allowed only to RWY 17R  (8) Significant obstacle: ACFT in holding bay	FT PER MIN	GS	FAF — MAPt	RWY17L DIST.	ALT (HGT)	MNM SECT ALT 25NM ARP  <div style="border: 1px solid black; border-radius: 50%; width: 100px; height: 100px; display: flex; align-items: center; justify-content: center; margin: 10px auto;"> 10300 </div>
STRAIGHT-IN APPROACH	LPV (8)	955 (210)	965 (220)	975 (230)	985 (240)		1010	180	4.1 NM	4.0	2156 (1411)	
	LNAV/VNAV	1124 (379)	1135 (390)	1147 (402)	1158 (413)		900	160	1 : 32	2.0	1476 (731)	
	LNAV	1470 (725)					780	140	1 : 46	1.0	1136 (391)	
							670	120	2 : 03			
							560	100	2 : 40			
CIRCLING (7)		1470 (702)		1650 (882)	1710 (942)		450	80	3 : 05			

## TABULAR DESCRIPTION

## RNP Y RWY 17L - Instrument Approach Procedure

Serial Number	Path Terminator	Waypoint Identifier	Fly Over	Course °M(°T)	Magnetic Variation	Distance (NM)	Turn Direction	Altitude (ft)	Speed Limit (kt)	VPA/ TCH	Navigation Specification
010	IF	MMP	-	-	-	/	-	+5000	210	-	RNP APCH
020	TF	MC724	-	279 (282.0)	-	6.2	-	-	-	-	RNP APCH
030	TF	MC723	-	346 (349.0)	-	4.0	-	+4500	185	-	RNP APCH
040	RF Centre:MC005 r=2.75NM	MC722	-	-	-	-	R	+2800	185	-	RNP APCH
050	TF	MC721	-	166 (169.0)	-	2.2	-	+2200	160	-	RNP APCH
060	TF	RW17L	Y	166 (169.0)	-	4.1	-	-	-	3.2°/ 50Ft	RNP APCH
070	CF	MC906	-	166 (169.0)	3	-	-	-	-	-	RNP APCH
080	TF	INLER	-	168 (170.4)	-	9.7	-	+3000	190	-	RNP APCH

Path Terminator	Waypoint Identifier	Inbound Course °M (°T)	Leg Distance (NM) (1)	Timing(min.)/ Waypoint Distance (NM) (2)	Turn Direction	Minimum Altitude (FT)	Maximum Altitude (FL)	Speed Limit (kt)	Magnetic Variation (°)	Navigation Specification
HM	INLER	356 (359.0)	3.5	1/-	R	+3000	-	190	3	RNAV1
HM	MMP	316 (319.0)	4.5	1/-	R	+5000	-	210	3	RNAV1

- (1) RNAV system with holding functionality  
 (2) RNAV system without holding functionality

## WAYPOINT LIST

Waypoint Identifier	Coordinates
MC724	45°39'43.72" N – 008°35'28.77" E
MC723	45°43'39.29" N – 008°34'23.65" E
MC722	45°44'42.33" N – 008°42'06.13" E
MC721	45°42'34.54" N – 008°42'41.54"E
MC906	45°31'40.95" N – 008°45'42.02"
RF Arc Centre Identifier	Coordinates
MC005	45°44'10.61" N – 008°38'14.93" E

## SBAS FAS DATA BLOCK LIMC RNP Y RWY 17L

## Input data

Operation Type	0
SBAS Provider	1 (EGNOS)
Airport Identifier	LIMC
Runway	17
Runway Letter	3 (Left)
Approach Performance Designator	0
Route Indicator	Y
Reference Path Data Selector	0
Reference Path Identifier	B17B
LTP/FTP Latitude	453831.3335N
LTP/FTP Longitude	0084348.8470E
LTP/FTP Ellipsoidal Height (metres)	272.6
FPAP Latitude	453656.6995N
Delta FPAP Latitude (seconds)	-94.6340
FPAP Longitude	0084414.9855E
Delta FPAP Longitude (seconds)	26.1385
Threshold Crossing Height	15.0
TCH Units Selector	1 (meters)
Glidepath Angle (degrees)	3.20
Course Width (metres)	105.00
Length Offset (metres)	0
HAL (metres)	40.0
VAL (metres)	35.0

## Output data

Data Block	10 03 0D 09 0C D1 C8 00 02 37 31 05 4B 62 96 13 DE 21 BF 03 A6 1E AC 1C FD 35 CC 00 2C 81 40 01 64 00 C8 AF 9E 26 7A D3
Calculated CRC Value	9E267AD3

## Required Additional Data

ICAO Code	LI
LTP/FTP Orthometric Height (metres)	227.0

Intenzionalmente bianca

*Intentionally left blank*